



# MS 6000

Minolta Microfilm Scanner

The essentials of imaging

[www.minolta.com](http://www.minolta.com)



**MINOLTA DIGITAL MICROFORM SCANNER**

**TYPE:** DESKTOP UNIVERSAL SCANNER

**SCREEN SIZE:** 300mm X 300mm(12" X 12")

**RESOLUTION:** 200, 300, 400, 600, 800 dpi

**SCAN SPEED:** 6.5 SECONDS

**MEDIA:** MICROFICHE, JACKETS, APERTURE CARDS  
16mm & 35mm ROLL FILM, 16mm CARTRIDGES



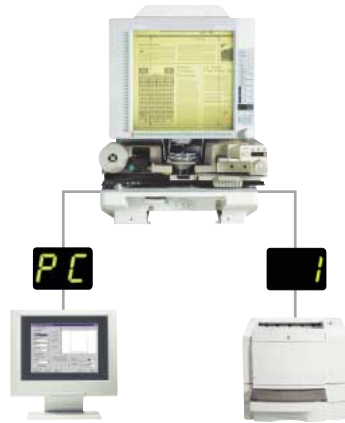
MS  
6000

SCAN | READ | PRINT

# SOLUTION

## DUAL OUTPUT

**FUNCTION:** Prints or scans images through simple front-panel controls, giving you a computer peripheral that lets you scan microfilm and microfiche images into your PC at up to 800 dpi resolution for use in web sites, e-mail, faxes, desktop publishing and electronic distribution.



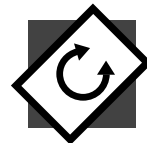
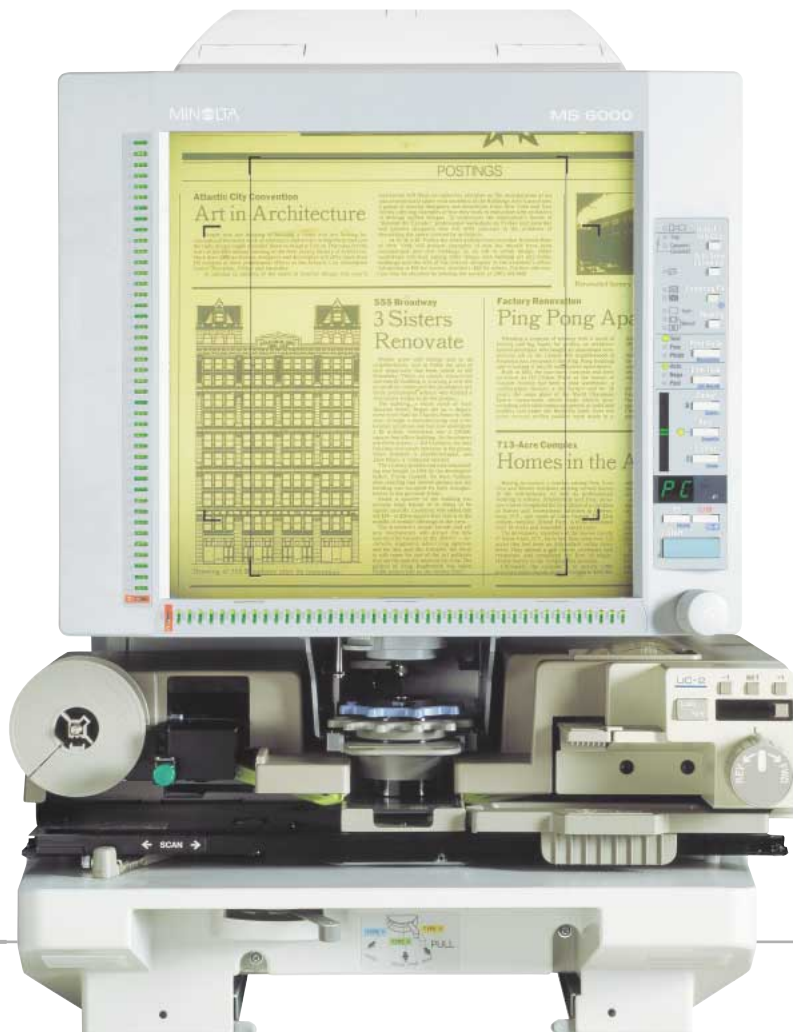
## MS 6000: YOUR TOTAL SOLUTION FOR DUAL-OUTPUT SCANNING & PRINTING.

Read on screen. Print on paper. Scan to PC. The new digital era gives you new opportunities for making microform information more powerful, versatile and cost-effective. Minolta's MS 6000 is the ideal digital solution for a wide range of high-productivity applications — in libraries, reference collections, education, government, or business — because it combines more ways to use your micrographic archive.

With dual output, you can switch from PC scanning to high-speed laser printing at the touch of a button. When connected to a PC, the MS 6000 allows you to scan at up to 800 dpi resolution — to use and distribute your microform information in web sites, e-mails, faxes and desktop publishing. With a wide range of microform options, you can handle any media. And with modular scanner and printer, you can set up your system to suit your work environment — even have two scanners share a single printer.

Professionals already count on Minolta microform scanners for quality optics and sturdy construction. With the MS 6000, we've raised our own high standard for high-resolution scanning, fast high-quality printing, ease of operation, and long-term reliability. Solution: Minolta!

**300 X 300mm (12" X 12") SCREEN:** A high-resolution anti-glare screen with adjustable screen brightness makes reading microform images easier on your eyes.



## AUTO IMAGING

### CONVENIENCE:

Motorized image rotation, auto skew correction, auto centering and auto frame masking are all standard features.

## PROVEN TECHNOLOGY:

The MS 6000 builds on the success of the popular Minolta MicroSP 2000 and MS 2000. We took all we learned from a track record of proven success at some of today's leading library and business applications to make the MS 6000 even better — with a combination of modern features and field-tested technology that give you one of the most reliable, user-friendly microform systems on the market.

# PRINTING

## MINOLTA GIVES YOU HIGH QUALITY LASER PRINTS QUICKLY AND RELIABLY.

When your application needs high-quality prints, why compromise? Minolta's MS 6000 is designed for use with superior Minolta laser printers that get the job done better. Because they work just like standard PC printers, they're more reliable. Paper is easier to load. Toner is simple to replace with the all-in-one imaging unit. And your end-users can do it all themselves, without asking for staff personnel assistance.

The System Laser Printer outputs high-resolution prints at up to 20 pages per minute, with first print in as little as 13 seconds. That helps improve your throughput efficiency when microform document prints are in demand. The System Laser Printer also provides fast warm-up time, 650-sheet maximum paper capacity, and Minolta's exclusive Fine Micro-Toning (Fine-MT) System for superior image detail.

With a modular stand-alone printer, your MS 6000 setup can suit the needs of any work environment. And when cost or workspace is an issue, it allows two scanners to share a single printer — more reasons to choose Minolta!



### SYSTEM LASER PRINTER:

With output speed up to 20 pages per minute, your users can make prints faster. 600 dpi resolution gives you sharp, legible images. You can enlarge prints up to 200% to show more detail — and 2-to-1 sharing lets two MS 6000 scanners share a single printer for greater cost efficiency.

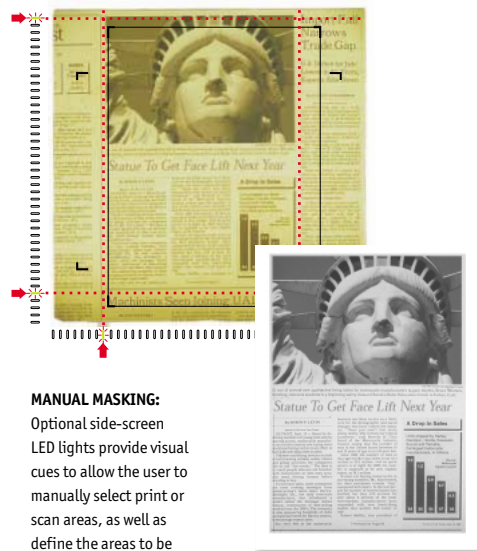
### HIGH PAPER CAPACITY:

150-sheet paper tray and 250-sheet universal cassette give you standard 400-sheet capacity — and you can add optional 250-sheet universal for high-volume applications.



### SUPERIOR PRINT

**QUALITY:** Minolta's exclusive Fine Micro-Toning (Fine-MT) System uses precision laser technology to reproduce fine details other printers might miss. You can choose Text mode for legible text, Photo mode to make halftone images more vivid, Fine for maximum detail.



### MANUAL MASKING:

Optional side-screen LED lights provide visual cues to allow the user to manually select print or scan areas, as well as define the areas to be masked or cut.

### EASIER MAINTENANCE:

An all-in-one imaging unit and a short paperfeed path makes changing toner and clearing jams quick and easy.



# MS 6000 VERSATILITY

## MINOLTA PROVIDES SYSTEM VERSATILITY TO MAKE YOU MORE PRODUCTIVE.

Sometimes you need a quick print. Sometimes you'd prefer scanning to your PC. Minolta's MS 6000 makes it easy to do both — and that can make your microform application more productive.

You've always got two output channels: an optional SCSI channel for PC scanning, and a standard high-speed video channel for laser printing. With your MS 6000 connected to both printer and PC, you can conveniently switch from scan to print output at the touch of a button.

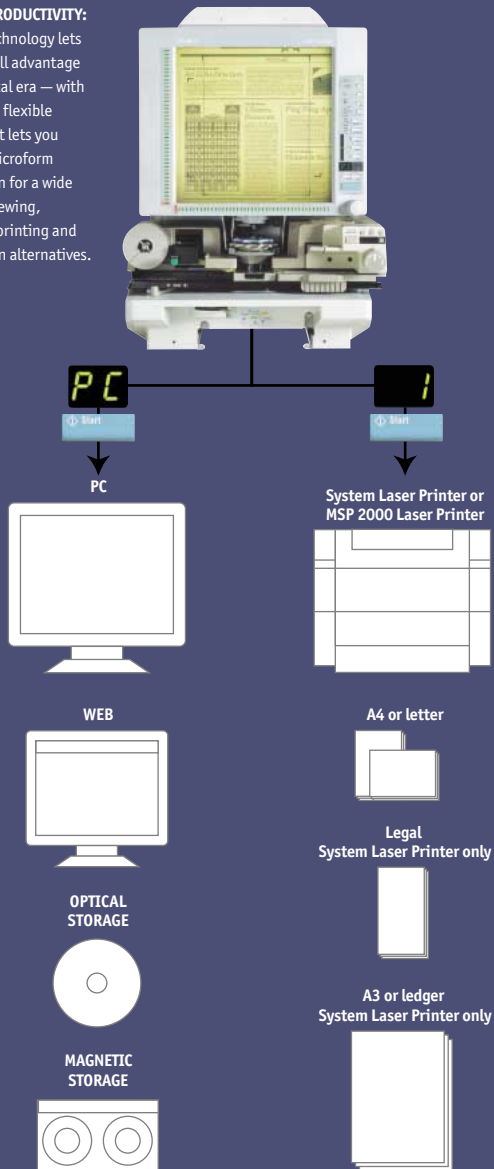
Need a new perspective on your information? You can choose from four types of interchangeable lenses with any magnification ratio you'll need, from single focus 7.5x lens, to zoom lenses that span 9 - 16x, 13 - 27x, or 23 - 50x zoom ratios — the same lenses used by Minolta MS2000 microfilm scanner and MicroSP 2000, RP603Z/RP605Z reader-printers.

Whatever form your micrographics take, Minolta provides the carrier you need: a full selection of precision microform carriers for rolls and fiche, cards and jackets, any media requirements. Carriers are also interchangeable with Minolta MS 2000 microfilm scanner and MicroSP 2000, RP603Z/RP605Z reader-printers.

And to help you work faster and smarter, Minolta MARS Controllers enable your computer-aided retrieval software to automatically search, find and print your blipped microform images.

So for printing and scanning, speed and convenience, quality and reliability, and total system versatility, the Minolta MS 6000 is your ideal microform solution.

**DIGITAL PRODUCTIVITY:**  
Minolta technology lets you take full advantage of the digital era — with a versatile, flexible system that lets you use your microform information for a wide range of viewing, scanning, printing and distribution alternatives.



### VERSATILE OUTPUT:

You can output laser prints on a variety of paper: A4 or letter, legal, even A3 or ledger. The MS 6000 can automatically scale all images to fit larger size output.



(The photo shows operation panel for 120V areas only.)

# SCANNING

## MINOLTA MAKES IT FAST AND EASY TO SCAN MICROFORM IMAGES TO YOUR PC.

There's never been a Minolta scanner so easy to operate — and the Minolta MS 6000 makes it easy to scan microform information to your PC. You can scan to PC for electronic filing and access throughout your organization. You can also use information in web sites, e-mail, faxes and electronic distribution via the Internet.

For walk-up users, the MS 6000 is simple and self-explanatory. All important controls are at your fingertips and clearly labeled — including a Dual Output function that prints or scans images at the touch of a button.

And when you scan to PC, you don't have to move from scanner to PC keyboard — because front-panel "push" scanning lets you initiate scanning and make all scan adjustments right from the front panel of your MS 6000!

**PC CONNECTION:** To make scanning easy, a standard SCSI Interface with TWAIN software driver lets you use Windows 95/98, Windows NT 4.0/2000. A powerful SCSI-2 connection allows faster transfer rates through standard cables.

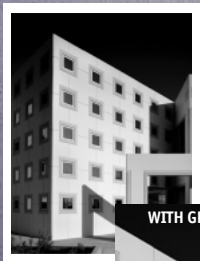


### INTERNET APPLICATIONS:

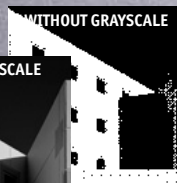
Digital technology lets you do more with your microforms — because you can scan to PC, then make your information available in web sites, e-mail, faxes and electronic distribution via the Internet.

### GRAYSCALE SUPPORT:

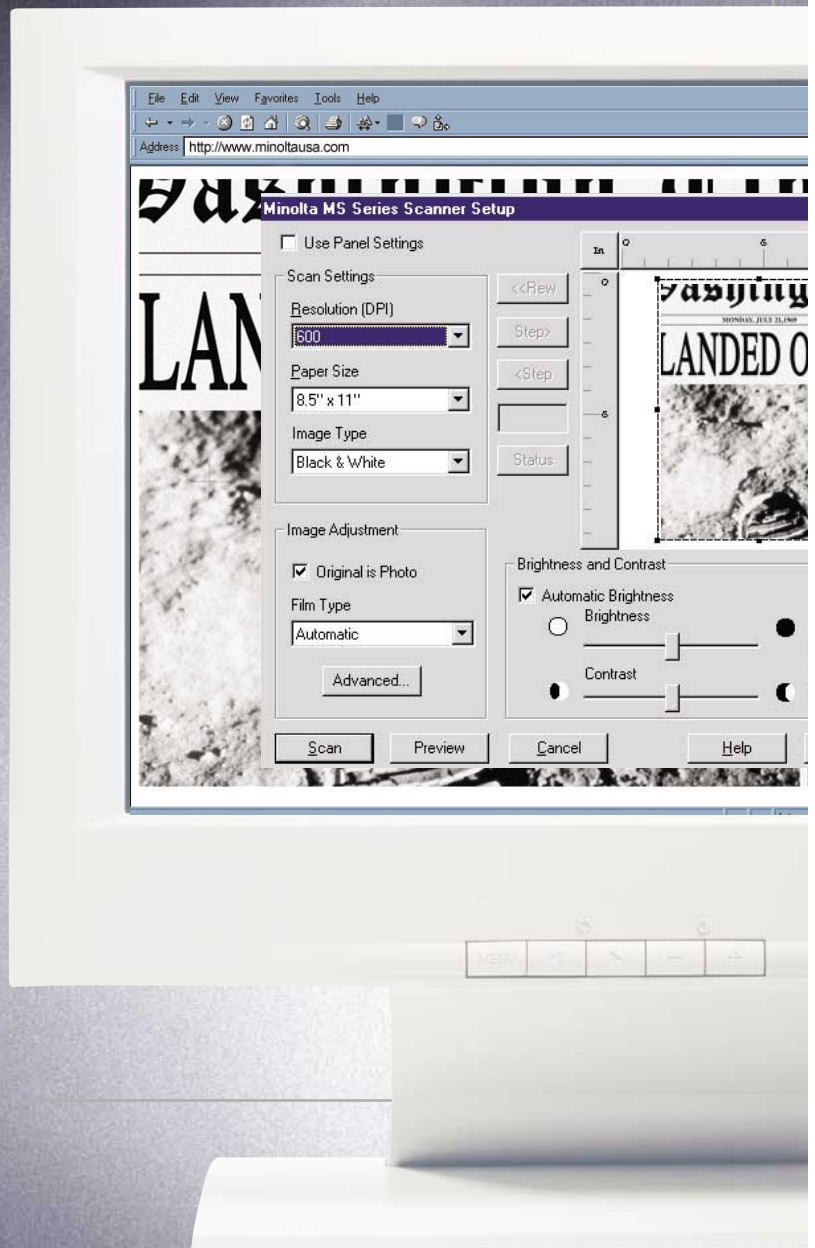
If your business application demands high-quality photos or detailed graphics, the optional Grayscale Upgrade Kit lets you output 8-bit grayscale images to your PC. With it, your images will be more detailed when compared to black and white, plus it also allows low-contrast images to be captured as accurately as possible.



WITH GRAYSCALE



WITHOUT GRAYSCALE



## MS 6000 SCANNER SPECIFICATIONS

**TYPE:**  
Desktop Universal Digital Microform Scanner

**TYPE OF FILM:**  
Microfiche, jackets, aperture cards,  
16mm & 35mm roll film, 16mm film cartridges

**SCREEN SIZE:**  
300 x 300mm (12" x 12")

**MAGNIFICATIONS:**  
7.5x, 9 - 16x, 13 - 27x, 23 - 50x

**FOCUS CONTROL:**  
Manual

**IMAGE ROTATION:**  
Prism rotation (auto; prism lens included)  
Carrier rotation (fiche carrier)

**ZOOMING:**  
Manual

**SCANNING SPEED:**  
6.5 seconds per page (A4 or letter, portrait 400 dpi)

**SCANNING DENSITY:**  
200, 300, 400, 600, 800 dpi

**OPTICAL RESOLUTION:**  
400 dpi

**ELECTRONIC ZOOMING:**  
50% - 200%

**MULTIPLE PRINTING:**  
1-19 prints (LED countdown identification)  
w/ System Laser Printer & MSP 2000 Laser Printer

**HARDWARE INTERFACE:**  
Video (Direct Print)  
SCSI-2 (PC)  
(Switchable on front panel)

**EXPOSURE:**  
Auto, Manual

**SCANNING FEATURES:**  
Auto Centering  
Auto Frame Masking  
Auto Image Rotation  
Auto Skew Correction  
Date Stamp Annotation (optional, w/printer)  
Footswitch Support (optional)  
Front-Panel Scanning ("push" scanning)  
Grayscale Support (optional)  
Manual Masking (trimming & masking; optional)

**HALOGEN LAMP:**  
20V, 150W

**POWER REQUIREMENTS:**  
AC 220-240V, 50-60Hz or AC 120V, 60 Hz

**POWER CONSUMPTION:**  
350W

**DIMENSIONS:** (W x D x H)  
503 x 821 x 716mm  
(19-3/4" x 32-3/8" x 28-1/4")

**WEIGHT:**  
39kg (86 lbs.)

**OPTIONS:**  
Footswitch  
Grayscale Kit (8-bit output to PC)  
Lenses (same as for MicroSP 2000,  
MS 2000, RP 603Z & 605Z)  
Fiche Carrier 5  
Universal Carrier 2  
Roll Film Carrier 9B  
Roll Film Carrier 15 A/M  
Roll Film Carrier 21  
Manual Frame Masking Kit  
MARS Controller 4  
MARS Mini Controller 2  
PC Interface Kit  
Mechanical Counter kit

## SYSTEM LASER PRINTER SPECIFICATIONS

**PRINTER METHOD:**  
Laser electrostatic

**DEVELOPING SYSTEM:**  
Minolta Fine Micro-Toning (Fine-MT) System

**PRINT RESOLUTION:**  
400dpi/600 dpi

**FIRST PRINT SPEED:**  
13 seconds (A4 or letter, crosswise 400dpi)

**PRINT SPEED:**  
20 sheets per minute  
(A4 or letter, crosswise 400 dpi)

**PRINT SIZE:**  
A4 or letter  
legal  
A3 or ledger

**PAPER SUPPLY:**  
150-sheet universal paper tray  
250-sheet universal cassette  
Third paper unit with 250-sheet  
universal cassette (optional)

**MAXIMUM PAPER CAPACITY:**  
650 sheets

**WARM-UP TIME:**  
Less than 70 seconds

**POWER REQUIREMENTS:**  
AC 220-240V, 50-60 Hz or AC 120V, 60 Hz

**POWER CONSUMPTION:**  
750 W

**DIMENSIONS:** (W x D x H)  
561 x 521 x 409mm  
(22" x 20-1/2" x 16")

**WEIGHT:**  
28kg (61 lbs. 12 oz.)  
(including imaging cartridge)

## MSP 2000 PRINTER SPECIFICATIONS

**PRINTER METHOD:**  
Laser electrostatic

**DEVELOPING SYSTEM:**  
Minolta Fine Micro-Toning (Fine-MT) System

**PRINT RESOLUTION:**  
400 dpi

**FIRST PRINT SPEED:**  
19 seconds (A4 or letter, crosswise)

**PRINT SPEED:**  
8 sheets per minute  
(A4 or letter, crosswise)

**PRINT SIZE:**  
A4 or letter

**PAPER SUPPLY:**  
250-sheet (multi-purpose paper tray)  
Manual feeding (1 sheet at a time)

**MAXIMUM PAPER CAPACITY:**  
250 sheets

**WARM-UP TIME:**  
Less than 20 seconds

**POWER REQUIREMENTS:**  
AC 220-240V, 50-60 Hz or AC 120V, 60 Hz

**POWER CONSUMPTION:**  
580 W or less

**DIMENSIONS:** (W x D x H)  
397 x 446 x 251mm  
(15-3/5" x 17-1/2" x 10")

**WEIGHT:**  
7kg (15lbs. 7 oz.)  
(without toner cartridge)  
Drum cartridge weight: approx. 0.3kg  
(0.66 lbs.)  
Toner cartridge weight: approx. 0.5kg  
(1.1 lbs.)



**SYSTEM LASER PRINTER:**  
20-ppm output speed,  
650-sheet paper capacity,  
first copy in just 13 seconds.



**MSP 2000 LASER PRINTER:** 8-ppm output speed, 250-sheet paper capacity, first copy in 19 seconds.



Design and specifications are subject to change without notice.  
© 2001 Minolta Co., Ltd. All rights reserved. Reproduction in whole or in part without written permission is prohibited. Minolta and The essentials of imaging are trademarks of Minolta.

Minolta Co., Ltd. 3-13, 2-chome, Azuchi-Machi, Chuo-ku Osaka 541-8556, Japan  
[www.minolta.com](http://www.minolta.com)

S105(E)A-1 Item #: 9251-4431-01 Printed in Japan